



1/21 Hotham Road Gymea NSW

3  2  2 

This modern three-bedroom townhouse offers dual living areas and a private courtyard in a very convenient locale. Only moments away from schools, local amenities, public transport and three shopping centres - Westfield Miranda, Gymea village and South Village Kirrawee.

- Open plan living and dining area with floorboards throughout
- Modern kitchen with ample storage and dishwasher
- Master bedroom with walk-in wardrobe and ensuite
- Two additional bedrooms, both with built-in wardrobes
- Main bathroom with bath and shower and a separate toilet
- Ducted air conditioning upstairs and split system downstairs
- Spacious internal laundry with an additional toilet

[For full version visit the website](https://www.harwoodproperty.com.au/lease/nsw/sutherland/gymea/residential/townhouse/8166896)

Type : Townhouse

Price : \$950 per week

View : <https://www.harwoodproperty.com.au/lease/nsw/sutherland/gymea/residential/townhouse/8166896>



Chantelle Bliss
02 9531 0013



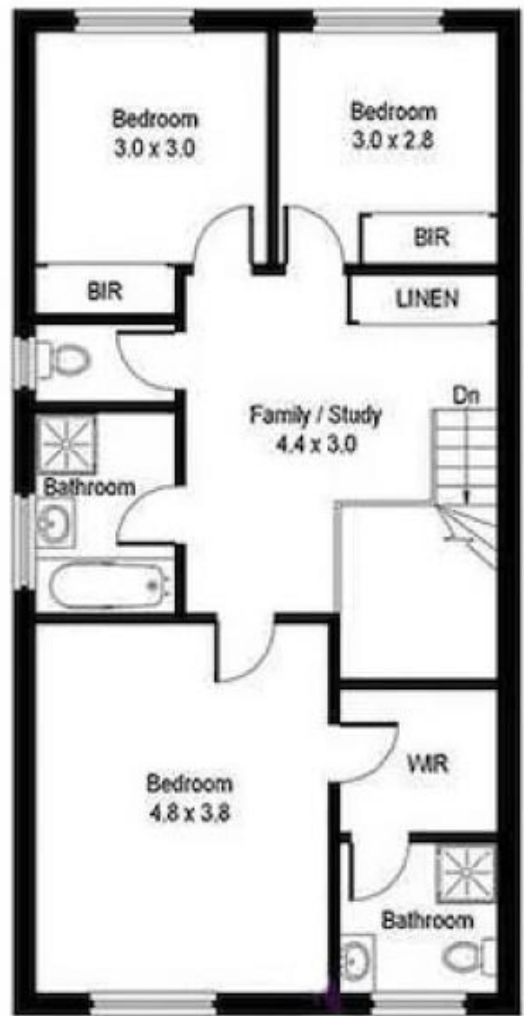
Ally Harper
02 9531 0013



Ground Floor

1/21 Hotham Road, Gymea

Please note: All stated dimensions are approximate only. Particulars given are of general information only and do not constitute any representation on the part of the vendor or agent.



First Floor

